

25X1

Approved For **SECRET** Release 2003/06/24 : CIA-RDP02T06408R000200010016-1

MCP



MISSION COVERAGE PLOTS

MISSION BX6842

4 JANUARY 1968

Declass Review by
NIMA/DOD

NPIC/R-5005/68
JANUARY 1968

GROUP 1 EXCLUDED FROM
AUTOMATIC DOWNGRADING
AND DECLASSIFICATION

Approved For Release 2003/06/24 : CIA-RDP02T06408R000200010016-1

SECRET

25X1

Approved For Release 2003/06/24 : CIA-RDP02T06408R000200010016-1

WARNING

This document contains information affecting the national defense of the United States, within the meaning of Title 18, sections 793 and 794, of the U.S. Code, as amended. Its transmission or revelation of its contents to or receipt by an unauthorized person is prohibited by law.

Approved For Release 2003/06/24 : CIA-RDP02T06408R000200010016-1

SECRET

NPIC/R-5005/68

Approved For Release 2003/06/24 : CIA-RDP02T06408R000200010016-1

25X1

MISSION COVERAGE PLOTS

MISSION BX6842

4 JANUARY 1968

JANUARY 1968

NATIONAL PHOTOGRAPHIC INTERPRETATION CENTER

Approved For Release 2003/06/24 : CIA-RDP02T06408R000200010016-1

SECRET

25X1

SECRET

NPIC/R-5005/68

Approved For Release 2003/06/24 : CIA-RDP02T06408R000200010016-1

25X1

PREFACE

This publication contains the geographic location plots of the photography on Mission BX6842, dated 4 January 1968. These plots are presented on a WAC format that has been reduced for convenience to approximately 60 percent of the original size. The line joining the plotted frames represents the trace of the principal points of the photography and does not necessarily represent the vehicle nadir (position of the vehicle in relation to the terrain). There are 5 plot sheets in this publication arranged in ascending order by control number.

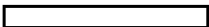
The flight-line index on page iii indicates the approximate track of the vehicle for that portion of the mission during which the camera was in operation.

TABLE OF CONTENTS

Flight-Line Index	Page iii
NPIC/P-18/68	WAC 677
NPIC/P-19/68	WAC 616
NPIC/P-20/68	WAC 615
NPIC/P-21/68	WAC 618
NPIC/P-22/68	WAC 617

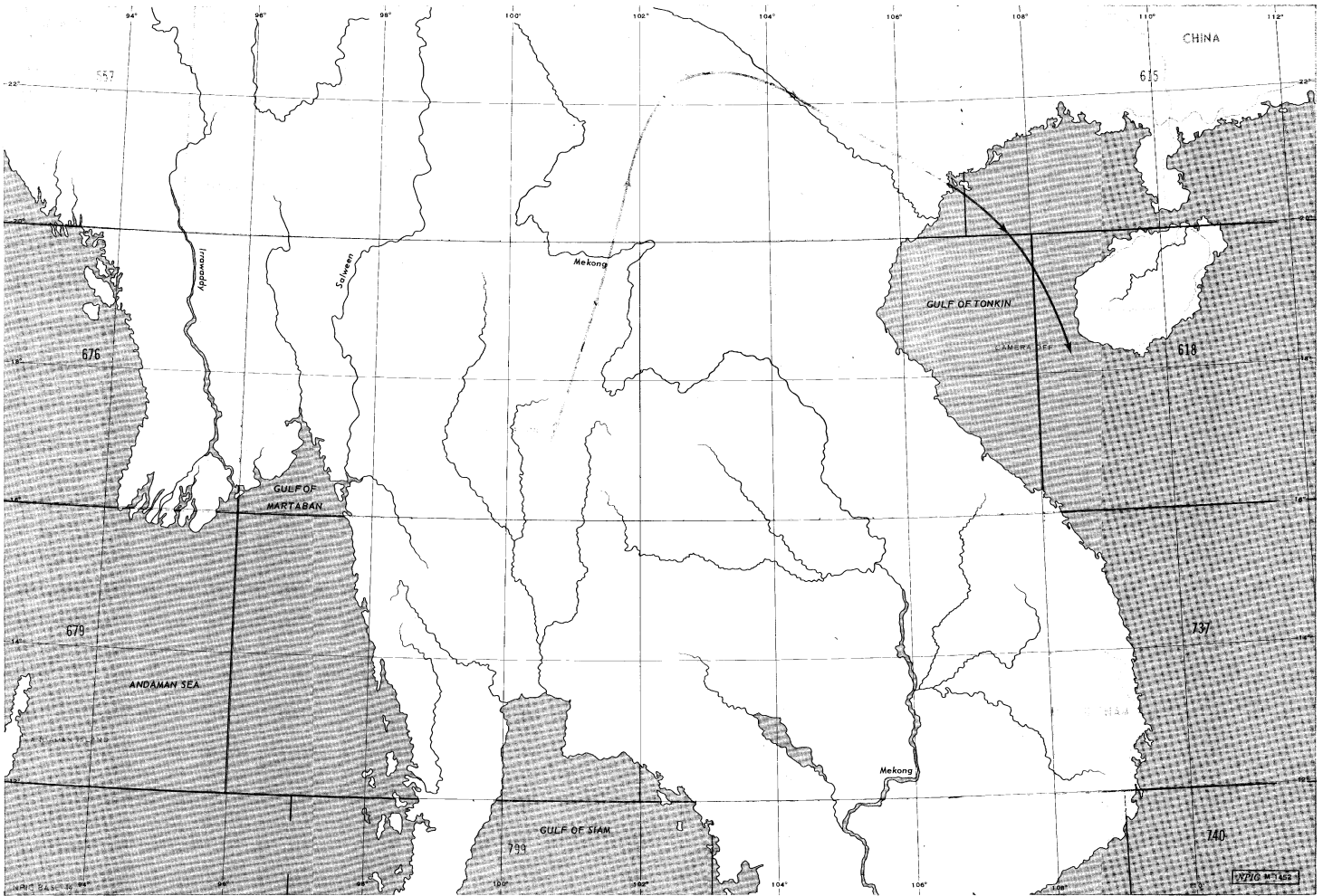
Approved For Release 2003/06/24 : CIA-RDP02T06408R000200010016-1

SECRET



25X1

SECRET

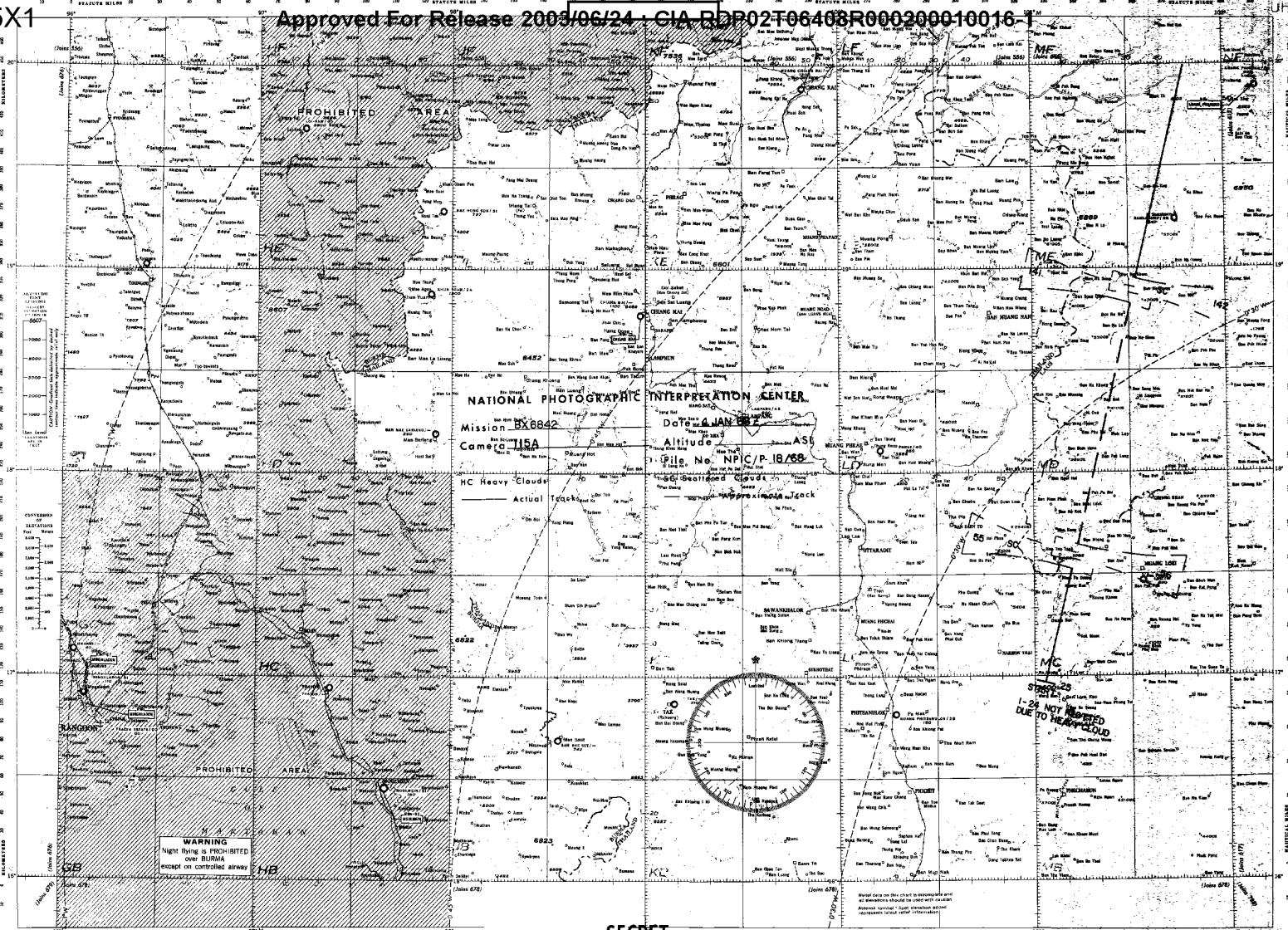


MISSION FLIGHT-LINE INDEX. This map shows the approximate track of Mission BX6842, 4 January 1968.

SECRET

Approved For Release 2003/06/24 : CIA-RDP02T06408R000200010016-1

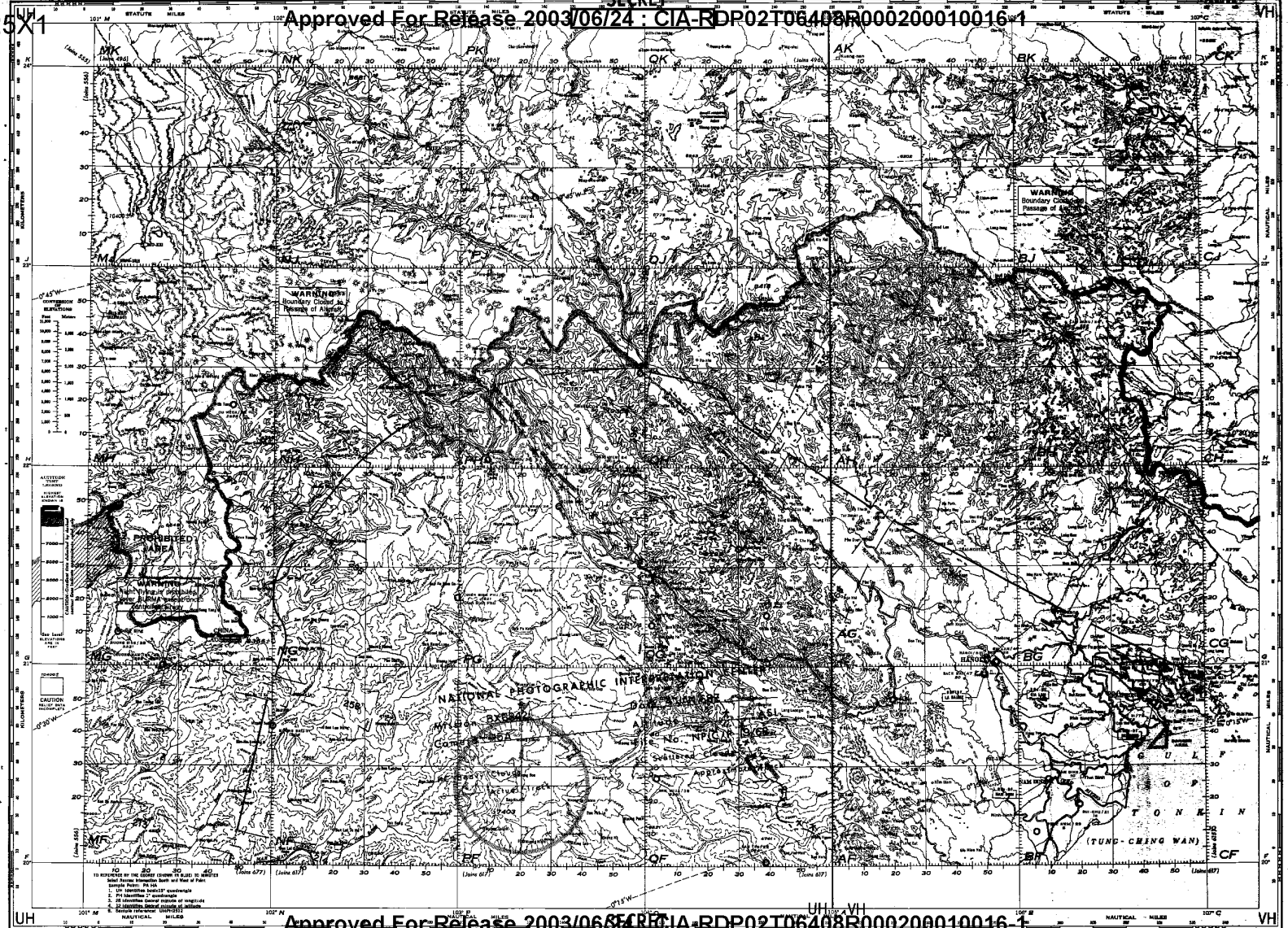
25X1



Approved For Release 2003/06/24 : CIA-RDP02T06408R000200010016-1

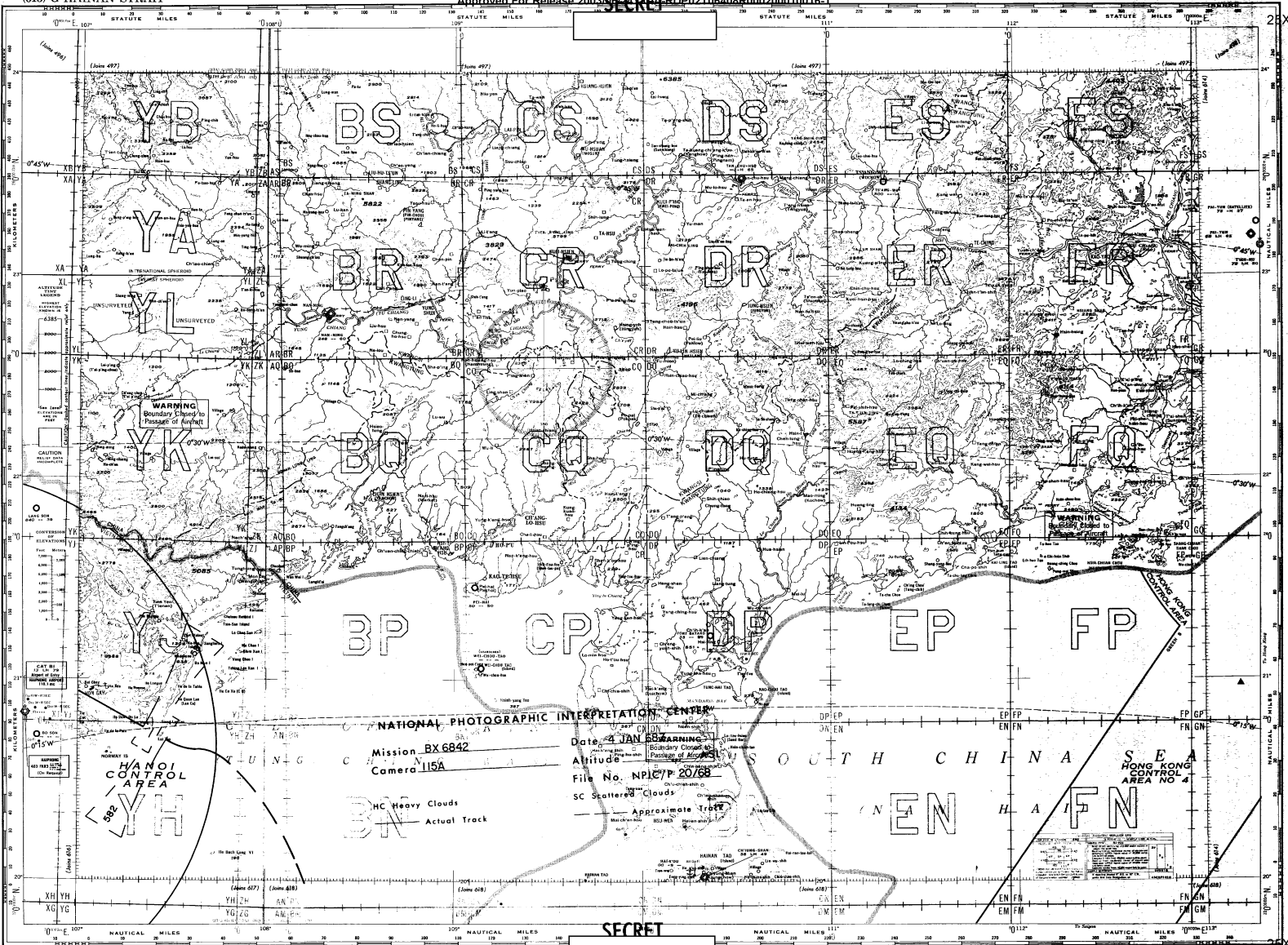
Approved For Release 2003/06/24 : CIA-RDP02T06408R000200010016-1

SECRET



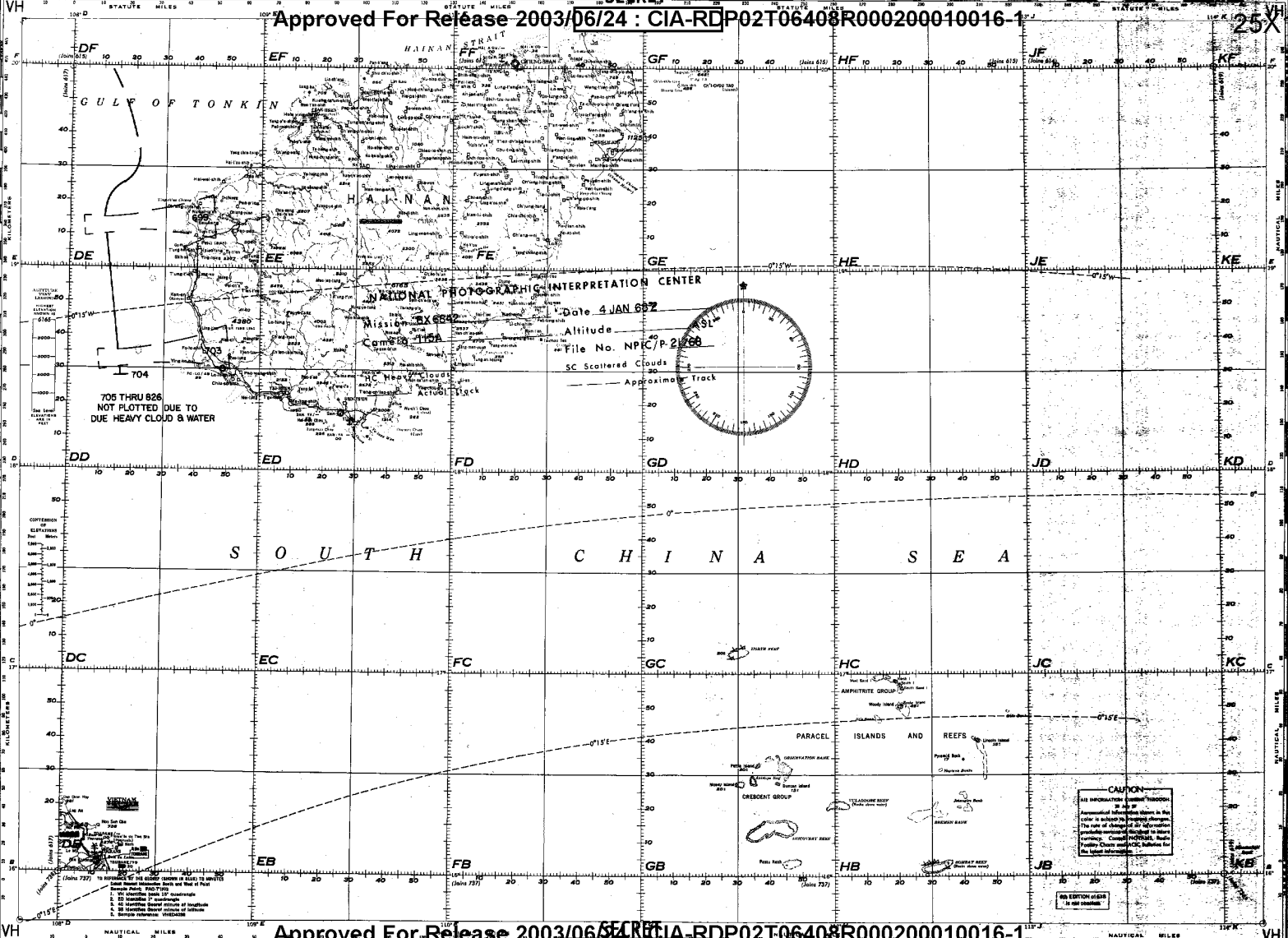
Approved For Release 2003/06/24 : CIA-RDP02T06408R000200010016-1

SECRET



Approved For Release 2003/06/24 : CIA-RDP02T06408R000200010016-1

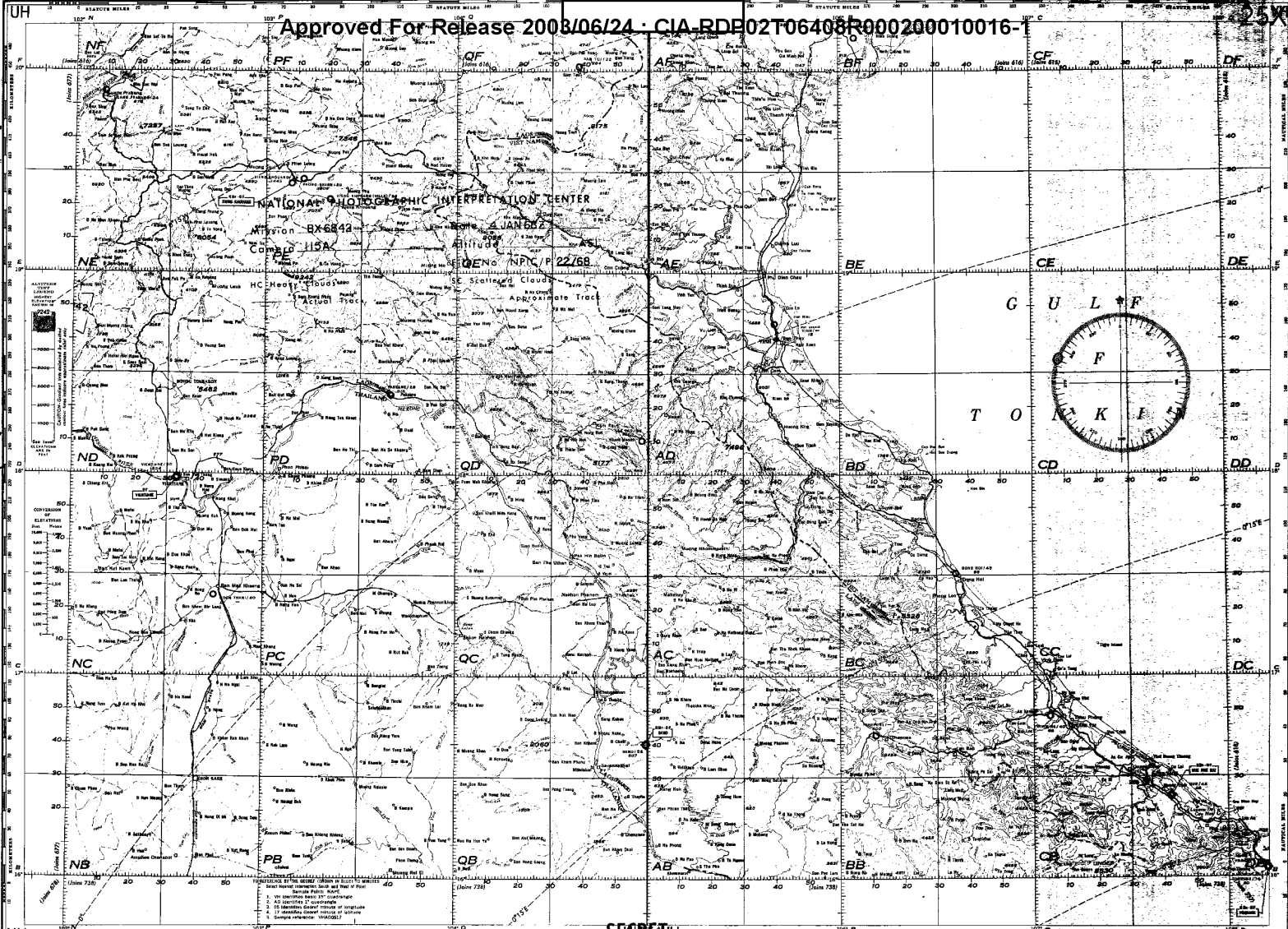
25X



Approved For Release 2003/06/24 : CIA-RDP02T06408R000200010016-1

25X(1)

Approved For Release 2003/06/24 : CIA-RDP02T06408R000200010016-1



Approved For Release 2003/06/24 : CIA-RDP02T06408R000200010016-1

SECRET

25X1

Approved For Release 2003/06/24 : CIA-RDP02T06408R000200010016-1

Approved For Release 2003/06/24 : CIA-RDP02T06408R000200010016-1